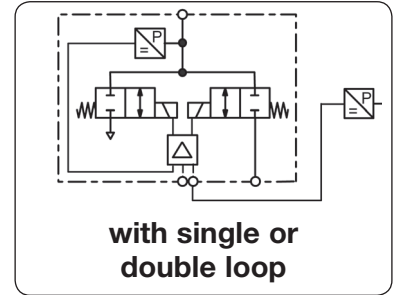
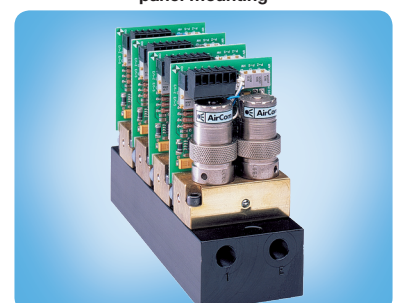


<b>Description</b>	Proportional control valve with closed loop control technology for better control of pressurised gases. The instrument can be built as single closed loop or dual closed loop control valve. dry, lubricated or unlubricated and 5 µm filtered compressed air or non-corrosive gases	
<b>Media</b>	constant outlet pressure at voltage drop	
<b>Fail freeze</b>	0 ... 10 V, impedance 4.7 kΩ,	ratio of internal to external relationship is 10% to 90%
<b>Second loop</b>	15 ... 24 V DC, residual ripple < 10%, with reverse voltage protection	
<b>Supply voltage</b>	0 ... 10 V / 4.7 kΩ, 4 ... 20 mA / 100 Ω,	jumper selectable command
<b>Impedance</b>	terminal strip for 2.5 mm <sup>2</sup>	
<b>Monitor signal</b>	3.6 W regulating, 0.5 W non-regulating	
<b>Electrical ports</b>	< 0.15% FS	
<b>Power consumption</b>	< 1% FS at 0 °C to 50 °C / 32 °F to 122 °F	
<b>Linearity / Hysteresis</b>	0 °C to 70 °C / 32 °F to 158 °F	
<b>Temperature influence</b>	Ports: brass	
<b>Temperature range</b>	Transducer: aluminium and silicon	
<b>Material</b>	<b>Air consumption</b>	without constant bleed
	<b>Repeatability</b>	< 0.02 FS
	<b>Adjustment</b>	zero point and span any, vibration-resistant
	<b>Mounting position</b>	Elastomer: FKM
		Valves: nickel-plated brass



Dimensions			Flow rate	Supply pressure	Accuracy	Connection thread	Pressure range	Order number
A	B	C	l/min*1	max. mbar/bar*2	%	G	mbar/bar	
mm	mm	mm						

Prop. pressure regulator								PM
0 ... 10 V input and monitor signal, supply voltage 24 V DC, fail freeze, single loop, for DIN rail								
56	78	54	35	20 mbar	5	G $\frac{1}{8}$	0 ... 10 mbar	PM1DE-B1
				200 mbar	0.8		0 ... 100 mbar	PM1DE-C1
				1000 mbar	0.2		0 ... 600 mbar	PM1DE-C6
56	78	54	35	2 bar	0.2	G $\frac{1}{8}$	0 ... 1 bar	PM1DE-01
				2 bar			0 ... 2 bar	PM1DE-02
				3 bar			0 ... 4 bar	PM1DE-04
				9 bar			0 ... 6 bar	PM1DE-06
				9 bar			0 ... 10 bar	PM1DE-10
				15 bar			0 ... 16 bar	PM1DE-16
				24 bar			0 ... 20 bar	PM1DE-20
56	78	54	35	2 bar	0.2	G $\frac{1}{8}$	0 ... -1 bar	PM1DE-V0
				2 bar			-1 ... +1 bar	PM1DE-V1

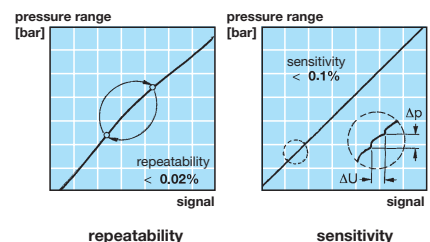
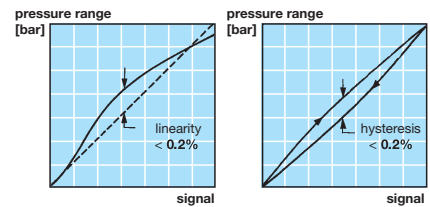
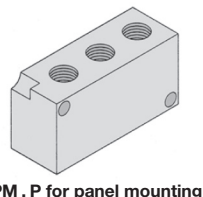
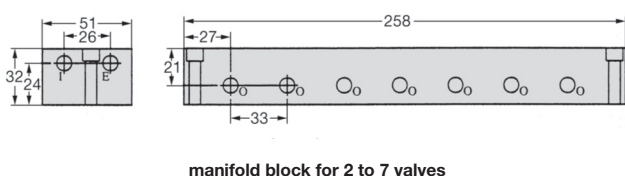
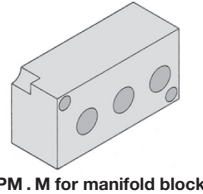
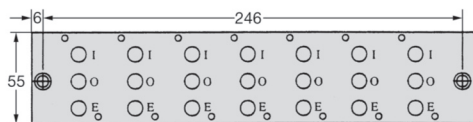
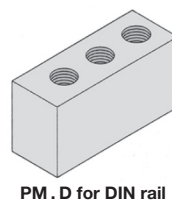
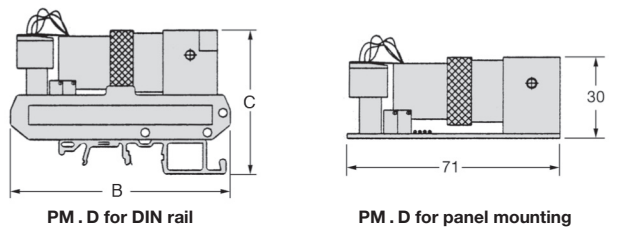


## Special options, add the appropriate letter

<b>double loop</b>	second loop feedback 0 ... 10 V	PM2 . . . .
<b>4 ... 20 mA</b>	supply signal, jumper selectable command	PM . . I . .
<b>flow 100 l/min</b>	increased flow rate	PM . . . . .HF
<b>panel mounting</b>	on plane level	PM . P . . .
<b>mounting for manifolds</b>	connections downwards	PM . M . . .

## Accessories, enclosed

**manifold block** for 2 to 7 valves number of valves added to order number **SBM-**



\*1 at 7 bar supply pressure and open outlet, at regulated flow rate of 3 l/min      \*2 higher supply pressures on request

For further details about double loop see PQ2

PDF CAD  
www.aircom.net

**Order example:**  
PM1DE-B1

